

**Title of the manuscript (Guide for authors of papers)** <Times 14, bold, title maximum 2 lines>

<1 line>

*A. Riberch<sup>1</sup>, A.F.M. Falchon<sup>2</sup> & A. Averd<sup>3</sup>* <Times 12, italic, no title(s)>

<1 line>

*<sup>1</sup>Università degli Studi della Tuscia, Dipartimento di Produzioni Animali, Via S. Camillo De Lellis, 01100 Viterbo, Italy*

*Corresponding Author: [Riberc@univit.com](mailto:Riberc@univit.com)*

*<sup>2</sup>Wageningen University, P.O. Box 120, 10023 Wageningen, The Netherlands*

*<sup>3</sup>Company or Institution, Address, Zip code, City, Country* <Times 12, italics>

<2 lines>

**Abstract** <Times 14, bold>

<1 line>

Text of the summary. <Times 12, regular> The paper should be printed on A4 format paper. The file has to be provided Word document. Figures should be supplied as either TIFF or JPG files, preferably at least with a resolution of 200. PPT slides will not be considered.

<1 line>

*Keywords: author, guide* <Times 12, italic, maximum ... keywords, no capitals, no & or and>

<1 line>

**Introduction** <Times 14, bold>

<1 line>

Text of the introduction. <Times 12, regular>

References in text should be: author (year) or (author, year), author 1 & author 2 (year) or (author 1 & author 2, year), author 1 *et al.* (year) or (author 1 *et al.*, year).

Never use capital letters, except when capital letters are grammatically necessary. Use only italics for Latin names of animals, plants or micro-organisms, and for figure and table captions.

<1 line>

**Heading of section, for example Material and methods** <Times 14, bold>

<1 line>

Text of section. <Times 12, regular>

<1 line>

**Heading of subsection** <Times 12, bold>

<1 line>

Text of subsection. <Times 12, regular>

<1 line>

*Heading of sub-subsection.* <Times 12, italics>

<1 line>

Text of sub-subsection. <Times 12, regular>

<1 line before a table>

*Table 1. Table captions should be placed above the table.* <Times 12, tables should be ended by a period>

Sample	Method A <sup>1</sup> <superscript>			Method B <sup>2</sup>		Total
	Mean	Std		Mean	Std	
		X	Y			
A	1.5	0.2	0.1	1.8	0.30	3.3
B	3.0	0.5	0.3	9.0	1.55	12.0
C	2.2	0.6	0.5	1.8	0.09	4.0

<sup>1</sup> Footnote 1 < Times 10, regular>

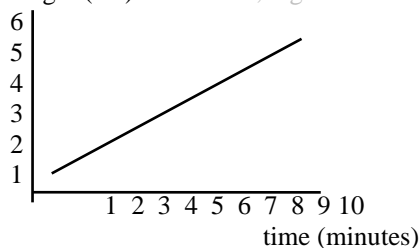
<sup>2</sup> Footnote 2

<1 line after a table>

Tables should be numbered consecutively in Arabic numbers, independent of figures. Tables and captions should be left justified. Use horizontal lines only when necessary. Do not use vertical lines, screens or colours in tables.

<1 line before a figure, figures should be inserted digitally and handed in on separate sheets of paper>

length (cm) <Times 10, regular>



*Figure 1. Figure captions should be placed under the figures.* <Times 12, captions should be ended by a period>

<1 line after a figure>

Figures should be numbered consecutively in Arabic numbers, independent of tables.

Formulas should be left justified, with right justified numbering in brackets.

<1 line>

$$A * B + \frac{C}{D} \leq E \quad (1)$$

<1 line>

## List of References <Times, 14 bold>

<1 line>

All references mentioned in the text should be listed at the end of the chapter, not as footnotes. For an example, see the next page.

Bond, J., 1981; <arrange first alphabetically by author(s) and secondly chronologically>

Bond, J., 1983;

Bond, J., S. Johnson & A. Turner 1981;

<For journal articles:>

Author(s), year. Title. Journal title (abbreviation) volume number (issue number between  
<indent 2 spaces> brackets, if needed): page-page.<to be ended by period>

Gaag, M.A. van der & R.B.M. Huirne, 2002. Elicitation of expert knowledge on controlling  
Salmonella in the pork chain. J. on Chain and Network Sc. 2(2): 135-147.

<For whole books>

Author(s), year. Title. Edition if any. Publisher, address. Number of pages.

Blok, M.C., H.A. Vahl, L. de Lange, A.E. van de Braak, G. Hemke & M. Hessing (editors),  
2002. Nutrition and health of the gastrointestinal tract. Wageningen Academic Publishers,  
Wageningen, The Netherlands, 200pp.

<For chapters from books>

Author(s), year. Title. In: booktitle, editors (editors), Publisher, address. page-page.

Beers-Schreurs, H.M.G. van & E.M.A.M. Bruininx, 2002. Nutritional management to prevent  
disorders in post-weaning pig health. In: Nutrition and health of the gastrointestinal tract,  
M.C. Blok, H.A. Vahl, L. de Lange, A.E. van de Braak, G. Hemke & M. Hessing (editors),  
Wageningen Academic Publishers, Wageningen, The Netherlands, p 135-158.